



**SPEAR &  
JACKSON**



Masonry Tools

**THE TOOLS TO TRUST**

*Spear & Jackson*  
Since 1760

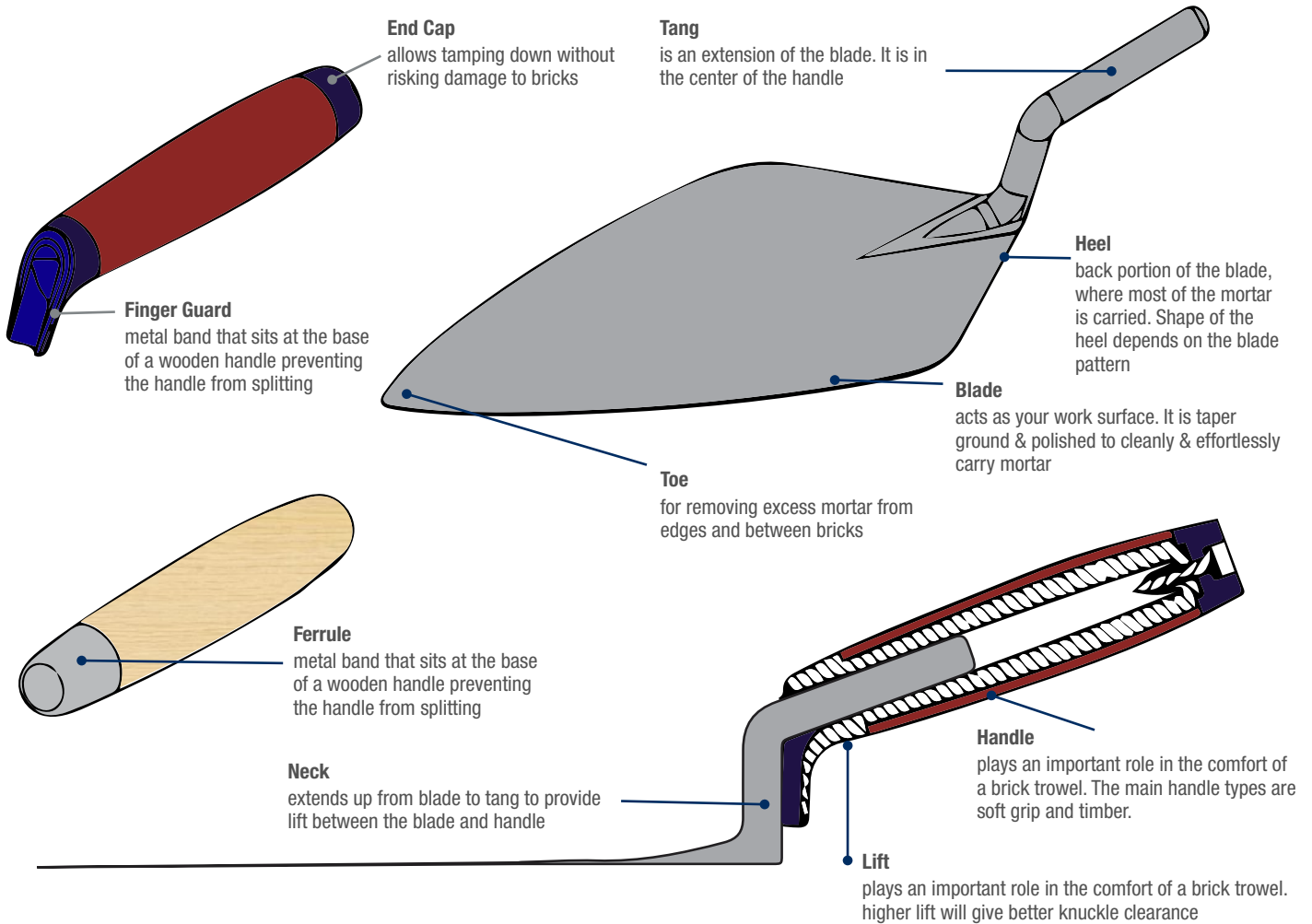


## **Craftsman-made quality for over 200 years**

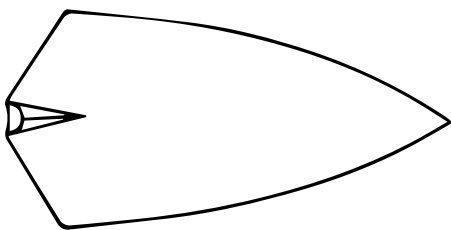
Craftsmanship quality dating back to 1760, our Masonry Tools range has developed over time to meet the current needs of modern-day building. With a DIY & professional range available, we provide the perfect tools for every budget and customer, be it professionals or home DIYers

# Brickworking Trowel Anatomy

When using a tool, it's important to know the parts of the tool and how they work. Knowing the parts of a brick trowel and their uses will help you make the best choice of which trowel to use.

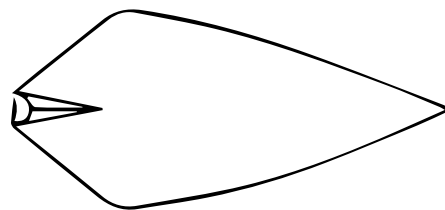


**“Pattern”** is an industry term used to describe the shape of a Brick Trowel’s blade.



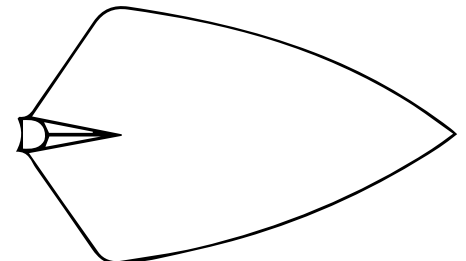
## Philadelphia Pattern

have a wide blade profile designed to hold more mortar making it easier to lay larger building materials like stone, that require more mortar than brick.



## London Pattern

have a narrow blade profile, and a rounded heel. Used in our smaller pointing trowels. Ideal for filling in small cavities and repairing crumbling mortar joints.



## Broad Heel Pattern

was designed for Australian market with a broader heel than the London Pattern, to take more mortar for laying cement/bessa blocks.





## Craftsman-made quality since 1837

**Tyzack is one of the oldest builders' tool brands, founded in 1837 by Joseph Tyzack & Sons.**

By expertly combining advanced design, technology and our commitment to quality, Spear & Jackson offers a comprehensive range of superb Tyzack brickwork tools.

Each of our trowels is crafted from the finest carbon steel with a solid forged blade and through tang for supreme strength. Handles are available in both traditional wood or the latest soft-feel material with ergonomic design.

**TYZACK is the first choice for ultimate comfort and performance.**

# Brickworking Tyzack Trowels

Tyzack professional brickworking tools with solid forged blades and plastic end caps for tapping down...

## SJ-10112SF Tyzack Broad Heel Brick Trowel Soft Feel Handle

- Solid forged blade
- Broad blade allows extra capacity for mortar
- Soft feel handle with integral finger guard
- Plastic end cap for tapping down
- Taper ground for progressive flexibility



SJ-10112SF 305mm Soft Feel, 5 Pack

## SJ-10712SF Tyzack Philadelphia Brick Trowel Soft Feel, Capped Handle

- Solid forged blade
- Broad blade allows extra capacity for mortar
- Plastic end cap for tapping down
- Taper ground for progressive flexibility



SJ-10712SF 305mm Soft Feel, 5 Pack

## SJ-11105N Tyzack Pointing Trowel Short Wood Handle

- Solid forged blade
- High tang for good knuckle clearance
- Short wood handle



SJ-11105N 125mm Short Wood, 10 Pack

## SJ-111XSF Tyzack Pointing Trowel Soft Feel Handle

- Solid forged blade
- Soft feel handle with integral finger guard
- High tang for good knuckle clearance



SJ-11105SF 125mm

SJ-11106SF 150mm

## SJ-PROFLP Tyzack Line Pins

- Made from drop forged and hardened steel for strength, and resists bending under pressure
- Tapered end ensures the line pin inserts easily into surface material
- Extra large head means the line is less likely to become detached whilst in use
- Chrome plated to prevent rusting



SJ-PROFLP Merchandiser 20 pins, 1 Pack





## Spear & Jackson Brickworking

With the wealth of knowledge from our Tyzack range we have developed a quality selection of value brickworking tools.

Designed for hard wearing performance, comfort and ease-of-use, this range features soft-feel handles and the highest quality blades for brickwork trowels and ancillary tools. The added feature of integral finger guards on brickwork tools makes for safer working.





# Brickworking Brick & Pointing Trowels

## SJ-500, SJ-555 Broad Heel Brick Trowel Soft Feel Handle

- Carbon steel blade
- Blade size thickness 1.57mm
- Broad heel pattern
- Ergonomic soft grip handle
- Laser etched blade



SJ-500 250mm Soft Feel, 6 Pack

SJ-555 305mm Soft Feel, 6 Pack

## SJ-520, SJ-525 Pointing Trowel Soft Feel Handle

- Carbon steel blade
- Ergonomic soft grip handle
- Laser etched blade



SJ-520 150mm Soft Feel, 6 Pack

SJ-525 175mm Soft Feel, 6 Pack

## SJ-PC180, SJ-PC300 Profile Clamps

- Used for holding a profile pole against brickwork when setting course heights
- Comfortable soft grip handle
- Adjustable depth
- Zinc plated finish



SJ-PC180 180mm 6 Pack

SJ-PC300 300mm 6 Pack

## SJ-21258B, SJ-21238C Convex Brick Jointer

- For smooth finishing in between bricks
- Convex profile
- Carbon steel body



SJ-21258B 13/16mm

SJ-21238C 10/13mm



High quality brickwork and ancillary tools, specifically designed for use by the professional or DIY tradesman...

### SJ-BGG Pointing & Grouting Gun

- Ideal for repointing brickwork , patios & paving slabs, grouting floor tiles, roof tiling brick replacement & stonework
- Leakage protection for vertical applications
- Quick, precise and accurate
- Provided with 2 spare seals



SJ-BGG, 10mm Nozzle, 4 Pack

### SJ-BRH24FG, SJ-BRH24AS Brick Hammer

Used by bricklayers for cutting and fitting bricks and stonework

- Fully polished head
- With a choice of:  
*Fibreglass Handle* - with dual material soft grip  
*All Steel* - forged one piece head & handle with dual material soft grip



SJ-BRH24FG 680g, Fibreglass, 6 Pack

SJ-BRH24AS 680g, All Steel, 6 Pack





# Brickworking

## Brick Bolsters & Line Pins

### SJ-DBB Brick Bolster

- Dropped forged 115mm blade
- Knuckle guard on grip
- Hardened plastic safety grip
- High visibility colouring



### SJ-DEB Electricians Bolster

- Dropped forged 75mm blade
- Knuckle guard on grip
- Hardened plastic safety grip
- High visibility colouring



### FP-620 Footprint Professional Line Pins

- Hardened & tempered drop forged blades
- Convex blade to hold the line pin firmly in the wall
- Extra wide head to prevent slipped blows
- Chrome plated to prevent rusting



FP-620 Merchandiser 50 pins, 1 Pack

### SJ-LP2P Line Pins

- Forged & hardened steel for strength, resists bending under pressure
- Tapered end ensures the line pin inserts easily into surface material
- Wide head for striking
- Chrome plated to prevent rusting



SJ-LP2P Line Pins Packs of 2, 10 Pack



## High quality bricklayers line by Spear & Jackson is strong nylon in 8 or 12 strand...

### SJ-8/50M Bricklayers Line 8 Strand 50m

- 8 Strand nylon
- 50 Meters
- Available in white, lime green, orange & pink
- Supplied in 12 unit display case



SJ-8/50M White, 12 Pack  
SJ-8/50M-LG Lime Green, 12 Pack

SJ-8/50M-O Orange, 12 Pack  
SJ-8/50M-P Pink, 12 Pack

### SJ-8/100M Bricklayers Line 8 Strand 100m

- 8 Strand nylon
- 100 Meters
- Available in white, lime green, orange & pink
- Supplied in 12 unit display case



SJ-8/100M White, 12 Pack  
SJ-8/100M-LG Lime Green, 12 Pack

SJ-8/100M-O Orange, 12 Pack  
SJ-8/100M-P Pink, 12 Pack

### SJ-12/100M Bricklayers Line 12 Strand 100m

- 12 Strand nylon
- 100 Meters
- Available in lime green & pink
- Supplied in 12 unit display case



SJ-12/100M-LG Lime Green, 12 Pack

SJ-12/100M-P Pink, 12 Pack

### SJ-12/500M-LG Bricklayers Line 12 Strand 500m

- 12 Strand nylon
- 500 Meters
- Available in lime green





# Brickworking

## Bricklayers Line & Block



### SJ-RLB Rubber Line Block

- Blocks are angled at 87.5° so when under tension, they square up into the corner of the brick for a better grip & a more stable line
- Durable one piece moulded rubber
- Ribbed to prevent slippage when in use
- Supplied in 12 piece coloured display box



SJ-RLB Lime Green

SJ-RLB/O Orange

### FP-624 Footprint Professional Line Block

- Window to see gauge markings
- Easy grip for tensioning
- Easy to tie line off



FP-624 Merchandiser 36 blocks, 1 Pack





SPEAR & JACKSON

**TYZACK**

## Tyzack Plastering Tools

Ever since Joseph Tyzack introduced steel blades to replace traditional wooden trowels in the late 19th century, the **TYZACK** name has set the standard for quality plastering tools. Another innovation was a patented design enabling the blade to be attached to the tang without the need for the rivets to go right through the blade thereby ensuring a totally smooth finish. Importantly, all **TYZACK** trowels are hand 'dished' by time served craftsmen to create a convex blade, solving the problem of 'drag lines' when finishing.

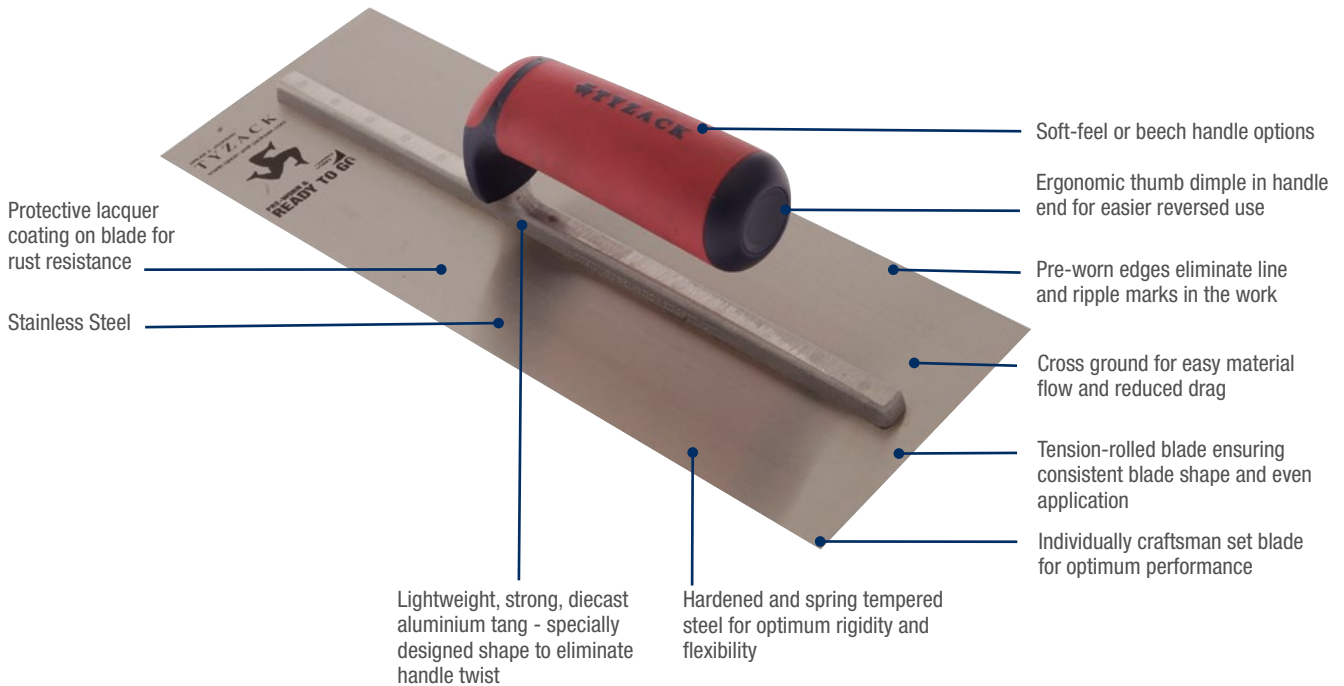
Additional features such as hardened and spring tempered blades also ensure that **TYZACK** tools are strong, durable and give outstanding performance. Available in both carbon and stainless steel with a variety of blade sizes and ergonomic handle options, **TYZACK** is the ultimate in comfort and performance.





# Plastering Tyzack Trowels

Pre-worn to professional standards, our revolutionary trowel is **'READY TO GO'** right from the start...



## SJ-13458BISF, SJ-14458BISF Tyzack Ready to Go Rounded Corner Trowel

- Individually craftsman set blade for optimum performance
- Rolled tension blade ensures consistent blade shape & even distribution
- Rounded corners to prevent digging in
- Pre-worn edges to eliminate line and ripple marks in the work
- Cross ground for easy material flow & reduced drag
- Soft feel handle for comfortable use
- Stainless steel blade
- Blade thickness 0.7mm
- 10 stud welds
- Single hang



SJ-13458BISF 330mm, 5 Pack

SJ-14458BISF 355mm, 5 Pack

## SJ-13100RSF Tyzack Finishing Trowel Soft Feel Handle

- Individually craftsman set blade
- Rolled tension blade ensures consistent blade shape and even application
- Lightweight, strong diecast aluminium tang
- Stainless steel rivets for longer life & added strength
- Soft feel handle for comfort
- Blade thickness 0.24mm
- 10 stud welds



SJ-13100RSF 280mm Carbon Steel, 5 Pack





## Spear & Jackson Plastering Tools

Designed for hardwearing performance, comfort and ease-of-use, this range features soft-feel handles and the highest quality blades for plastering.

Under the Spear & Jackson brand there is a comprehensive range of Plastering tools for both the tradesman and DIY user.



# Plastering Trowels

High quality plastering tools, specifically designed for use by the professional tradesman...

## SJ-550, SJ-551 Plastering Trowel Carbon Steel Soft Feel Handle

- Lightweight strong die-cast aluminium tang
- Rivets for longer life and added strength
- Carbon steel blade
- Ergonomically shaped soft feel handle



SJ-550 280mm, 6 Pack

SJ-551 330mm, 6 Pack

## SJ-10611SSF 280mm Plastering Trowel Stainless Steel

- Lightweight strong die-cast aluminium tang
- Rivets for longer life and added strength
- Stainless steel blade
- Ergonomically shaped soft feel handle



## SJ-RF280 Rendering Float Plastic Handle

- Plastic blade
- Ribbed non slip flexible plastic handle
- Blade size 280mm



## SJ-10608SF Mini Finishing Trowel Stainless Steel Soft Feel Handle

- Ideal for working in confined spaces
- Stainless steel blade for longer life
- Soft feel handle for extra comfort
- Ergonomically shaped soft feel handle

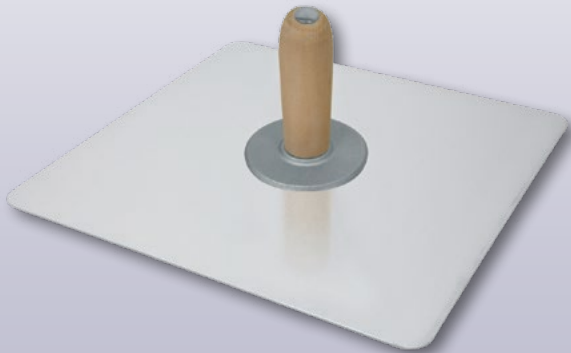




**High quality ancillary plastering tools with soft feel & timber handles for comfortable, sustained use...**

### **SJ-370 Plasters Hawk Timber Handle**

- Lightweight but strong aluminium blade
- Detachable machined non-slip timber handle
- Blade size 330mm x 330mm



### **SJ-530, SJ-535 Gauging Trowel Soft Feel Handle**

**For mixing small amounts of plaster & filling gaps in confined spaces**

- Fabricated carbon steel blade
- Soft feel handle with integrated finger guard
- Ergonomically shaped soft feel handle
- Polished and lacquered blade



SJ-530 175mm, 6 Pack

SJ-535 200mm, 6 Pack

### **SJ-710X Tyzack Mixing Paddle**

**Hard wearing paddle designed to fit a high power drill and ensure a fast and complete mixing process for mortars and plasters**

- Anti-rust chrome finish
- 10mm shaft diameter
- 100mm mixer diameter



### **SJ-JS10 Jab Saw Suregrip® Handle**

- Ideal for use on timber, hardwood, chipboard & MDF
- Comfortable Suregrip® handle
- Teeth cut on forward & reverse stroke
- Pointed to drive through plasterboard
- 330mm blade



### **SJ-JSD20 Jab Saw Soft Feel Handle**

- Ideal for use on timber, hardwood, chipboard & MDF
- Superior fast action blade
- Impulse hardened cross cut teeth
- Sharpened tip for plunge cuts
- Bi material soft feel handle
- 330mm blade





# Plastering Ancillary Tools

## SJ-SK25 Stiff Scraper 25mm

- Stainless steel stiff blade
- Rosewood timber handle
- For applying joint fillers, patching, scrapping jobs & trimming wallpapers



## SJ-SK50 Stiff Scraper 50mm

- Stainless steel stiff blade
- Rosewood timber handle
- For applying joint fillers, patching, scrapping jobs & trimming wallpapers



## SJ-SK75 Stiff Scraper 75mm

- Stainless steel stiff blade
- Rosewood timber handle
- For applying joint fillers, patching, scrapping jobs & trimming wallpapers



## SJ-SK100 Stiff Scraper 100mm

- Stainless steel stiff blade
- Rosewood timber handle
- For applying joint fillers, patching, scrapping jobs and trimming wallpapers



## SJ-718F Tyzack 100mm Jointing Knife

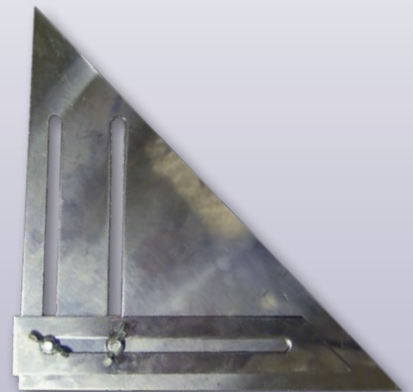
Jointing knife with handle ends for knocking back protruding nails

- Suregrip® handles
- Flexible stainless steel blades



## SJ-PLASQ Plastering Square

- For marking plaster sheet prior to cutting
- Stainless steel construction
- 210mm







## Sponge & Poly Floats

Upgrade your plastering with our high-quality sponge and poly floats! Perfect for pros and DIYers, these tools ensure smooth finishes effortlessly. Our sponge offers superior absorption, while the poly floats give precision and control. Elevate your craftsmanship today.



# Plastering Sponge & Poly Floats

High quality sponge & poly floats...

## SJ-PHS300 Poly Sanding Float

- One piece polypropylene handle & base
- Neoprene cushion to improve sanding capabilities
- Mounting bars with screw clamps for sand paper
- Supplied with fine sand paper
- Blade size 280mm x 108mm



## SJ-PD101 Sponge Float

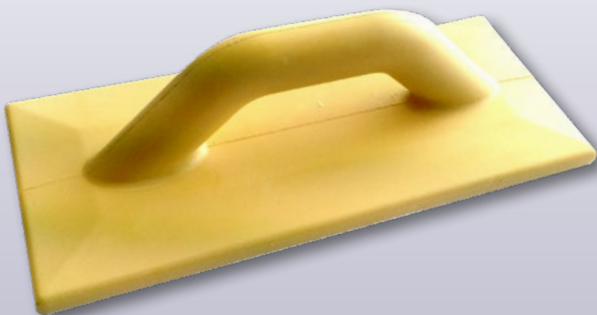
For finishing grainy surfaces such as sand and cement mix

- A firm rubber 20mm thick sponge
- One piece polyurethane handle & base
- Blade size 140mm x 230mm



## SJ-PA101, SJ-PA105 Polyurethane Floats

- One piece poly handle & base
- Textured surface
- Lightweight



SJ-PA101 280mm, 6 Pack

SJ-PA105 350mm, 6 Pack

## SJ-PF100, SJ-PF200 Polypropylene Floats

- One piece polypropylene handle & base
- Textured surface
- Lightweight



SJ-PF100 280mm, 6 Pack

SJ-PF200 340mm, 6 Pack





# Masonry Ancillary Tools

## EG-221 Caulking Gun Open Frame

- Open frame
- Hang hook
- Strong contoured trigger
- 220mm metal construction



## SJ-PCG Caulking Gun Premium Half Barrel Frame

- Premium quality
- Half barrel frame
- Hang hook
- Strong contoured trigger
- 225mm metal construction



## EM-TC0346 Glass Cutter Plastic Body

- Clear plastic body
- Oil lubricated
- Tungsten carbide cutting wheel
- Glass breaker end



## SJ-FS000 Floor Scraper T-Frame Handle

- Replaceable carbon steel blade
- Strong steel blade holder with butterfly nuts
- Tubular steel T-frame handle to prevent bending or breaking when in use



SJ-FS200 200mm, 3 Pk SJ-FS300 300mm, 3 Pk

## SJ-FS000B Replacement Blade for Floor Scraper

- Replacement carbon steel blade
- Supplied with butterfly nuts



SJ-FS200B 200mm, 6 Pk SJ-FS300B 300mm, 6 Pk

## EM-TC0347 Glass Cutter Metal Body

- One piece metal construction
- Tungsten carbide cutting wheel
- Glass breaker end







## Concreting Tools

Designed for professionals and DIY users alike, this range of concreting tools has been built to the same exacting standards of all Spear & Jackson products. There are two quality and price levels available in our Concreting Range, offering the perfect tools for every budget and customer.

A range of floats and accessories produced using innovative manufacturing techniques to give durable, well finished product that can be used every day.



# Concreting Finishing Trowels

High quality concreting tools, specifically designed  
for use by the professional tradesman...

## SJ-CF280, SJ-CF405 Concrete Finishing Trowel Soft Feel Handle

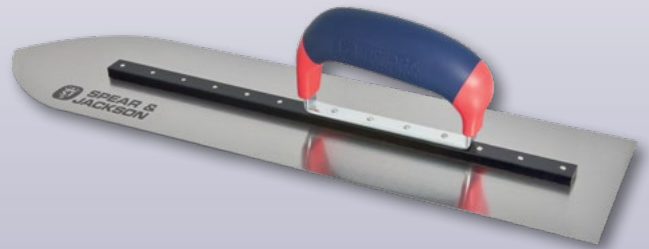
- Carbon steel blade
- Blade size thickness 0.70mm
- Ergonomic soft grip handle
- Laser etched blade



SJ-CF280 280mm Carbon Steel, 6 Pack SJ-CF405 405mm Carbon Steel, 6 Pack

## SJ-PF355, SJ-PF405 Concrete Pointed Finishing Trowel Soft Feel Handle

- Pointed nose
- Blade thickness 0.7mm
- Carbon steel blade
- Ergonomic soft grip offset handle
- Laser etched blade



SJ-PF355 280mm Carbon Steel, 6 Pack SJ-PF450 450mm Carbon Steel, 6 Pack  
SJ-PF405 405mm Carbon Steel, 6 Pack SJ-PF500 500mm Carbon Steel, 6 Pack

## SJ-50102, SJ-50103, SJ-50104 Pine Float

- Pine timber blade
- Comfortable plastic handle



SJ-50102 270mm, 12 Pk SJ-50103 375mm, 12 Pk SJ-50104 605mm, 12 Pk

## SJ-MF410, SJ-MF510 Magnesium Float

- Lightweight magnesium alloy blade
- Off set handle
- Comfortable plastic handle



SJ-MF410 410mm

SJ-MF510 510mm

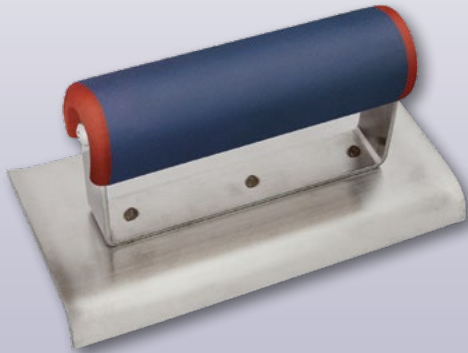


# Concreting Edgers

High quality ancillary plastering tools with soft feel & timber handles for comfortable, sustained use...

## SJ-540 Cement Edger Soft Feel Handle

- 10.8mm radius
- Stainless steel 150mm blade
- Ergonomic soft grip handle
- Laser etched blade



## SJ-348 Cement Edger Timber Handle

- 10.8mm radius
- Stainless steel 150mm blade
- Timber handle
- Laser etched blade



## SJ-541 Cement Groover Soft Feel Handle

- Groove depth 9mm
- Stainless steel blade
- Ergonomic soft grip handle
- Laser etched blade



## SJ-345 Cement Groover Timber Handle

- Groove depth 9mm
- Stainless steel blade
- Timber handle
- Laser etched blade

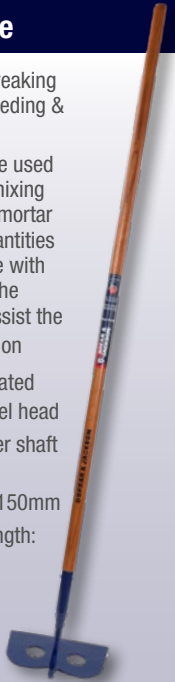




# Concreting Ancillary Tools

## SJ-MH1 Mortar Hoe

- Ideal for breaking up soil, weeding & cultivating
- Can also be used for quick mixing of plaster, mortar & small quantities of concrete with outlets in the blade to assist the mixing action
- Powder coated carbon steel head
- Long timber shaft
- Head Size: 230mm x 150mm
- Handle Length: 1400mm



## SJ-CPR Concrete Rake

- Designed for the shifting & placing of wet concrete during construction
- Full aluminium head & handle
- Head profiled for push pull action
- Head stays to improve rigidity
- Can be used for the spreading & levelling of sand & soil
- Head Size: 500mm x 100mm
- Handle Length: 1500mm



## SJ-WS350 Contractor Square Mouth Shovel

- Ideal for shovelling/mixing soils, sand & concrete
- All steel construction
- Handle Type: D Handle
- Blade Size: 300mm x 255mm
- Handle Length: 835mm



## SJ-WS360L Contractor Square Mouth Shovel

- Ideal for shovelling/mixing soils, sand & concrete
- All steel construction
- Handle Type: Long
- Blade Size: 300mm x 255mm
- Handle Length: 1190mm



## SJ-HG401 Hopper Gun

- Lightweight plastic hopper with grip
- 45° elbow to prevent spillage
- 3mm nozzle
- Contoured comfort trigger
- Material flow adjustment
- Air regulator
- Adjustable nozzle
- Hanging hoop

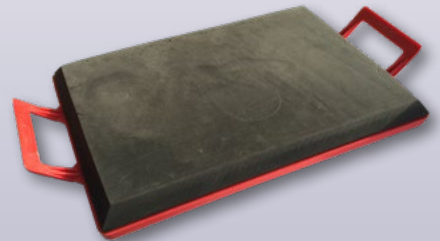


### Spare Parts

Part No.	Type
SJ-1714-1	E Ring
SJ-3113	Adj Screw Air Del
SJ-3118	Trigger Pin
SJ-3120	Connector
SJ-3128	Ring Clamp
SJ-FR301-03	4mm Replacement Nozzle
SJ-FR301-04	6mm Replacement Nozzle
SJ-FR301-05	8mm Replacement Nozzle
SJ-FR3102A	Retaining ring
SJ-FR3107A	Fitting
SJ-FR3108A	Replacement o-ring
SJ-FR3109A	Needle shaft
SJ-FR3112	Regulator guide
SJ-FR3114A	Gasket
SJ-FR3115A	O ring
SJ-FR3116A	Spring
SJ-FR3121A	O ring 36mm x 42mm x 3mm
SJ-FR3129	Plastic hopper
SJ-FR3130	Elbow
SJ-FR809	Blue Regulator Connection
EC-SJ-HG401-K1	Repair Kit

## SJ-KB Kneeler Board

- Kneeler board for concreter
- One piece poly tray with handles
- Pad size 500mm x 100mm
- Memory foam for maximum comfort
- Used for kneeling on concrete pads when doing finishing work





## MASONRY TOOLS

Available from all good professional tools stockists

These products are guaranteed against defects in manufacturing, subject to wear and tear and the provision of reasonable care and maintenance.

This does not affect your statutory rights.

**CONTACT  
US!**

### CUSTOMER SERVICE CENTRE

Spear & Jackson Australia PTY LTD  
PO BOX 4400  
Dandenong South, Victoria  
Australia 3175

Tel: 1300 731 818

Email: [sales@spearandjackson.com.au](mailto:sales@spearandjackson.com.au)

Follow us on:



FIND OUT MORE AT [www.spearandjackson.com.au](http://www.spearandjackson.com.au)

