

Measure & Mark Range  
**THE TOOLS TO TRUST**

*Spear & Jackson*  
Since 1760





## Mark, Measure

The small tools are just as important as the large ones. Every successful project will need to be measured and marked out. Spear & Jackson metric and imperial tape measures and squares, combined with spirit levels and chalk lines, are perfect for project preparation.



# Measure & Mark

## Tapes & Rulers

High quality essential measuring tools for the builder or renovator...

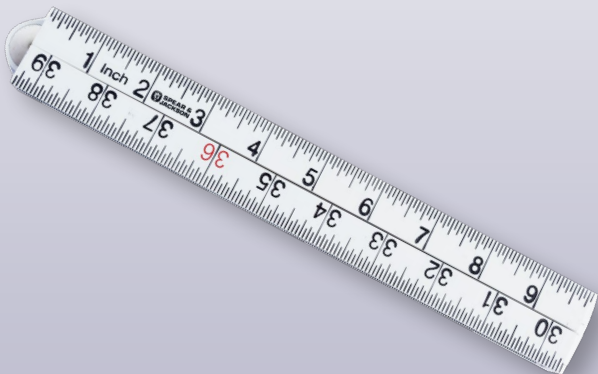
### SJ-3008M 8m Tape Measures

- Integrated belt clip and wrist band
- Impact absorbing rubber casing offers a better grip and greater comfort
- Auto lock blade system with a push release button
- Twin magnetic end hook
- Metric graduations



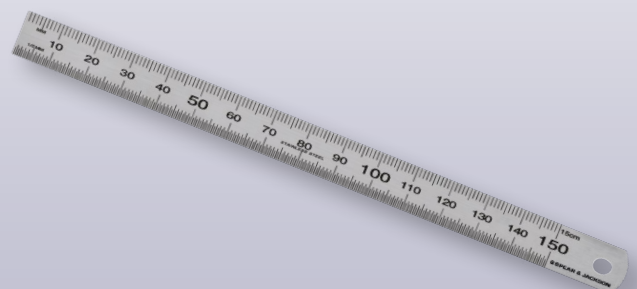
### SJ-FRMI 1000mm Folding Ruler

- 4 fold rule
- Tough combination of fibreglass & PVC
- Easy read etched numerals
- Metric & imperial graduations
- Bevelled edge



### SJ-SSRXXX Stainless Steel Rulers

- Premium stainless steel blades
- Hanging hole
- Easy read acid etched numerals
- Metric only graduation



SJ-SSR150 150mm, 20 Pack  
SJ-SSR300 300mm, 10 Pack

SJ-SSR600 600mm, 10 Pack  
SJ-SSR1000 1000mm, 10 Pack



# Measure & Mark Bevels & Squares

Comprehensive bevels & squares for every job...

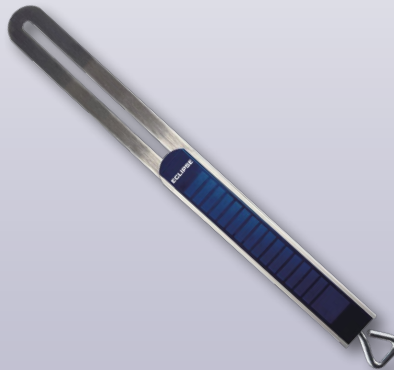
## SJ-STB200 Sliding Bevel - 200mm

- Used for the setting and duplicating of angles in carpentry
- 1.5mm stainless steel blade
- Tough ABS body



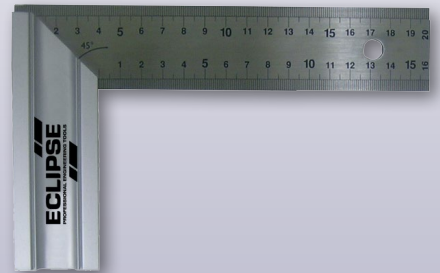
## EC-ESB250 Sliding Bevel - 250mm

- Great for making furniture, putting up shelves or fixing skirting boards and architraves
- Carbon steel blade
- Aluminium base
- End screw for secure locking of the bevel in the required position



## SJ-TMSXXX Square Try & Mitre

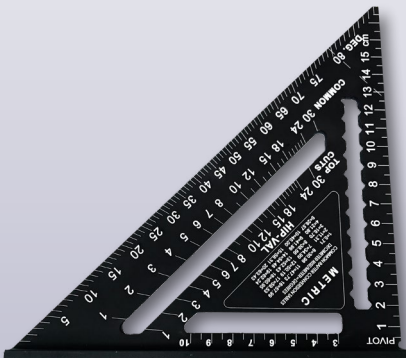
- Premium 1.5mm stainless steel blade
- Accurate acid etched numerals
- Strong but lightweight aluminium stock
- Suitable for carpentry applications
- Ideal for 90° & 45° degree settings



SJ-TMS200 200mm  
SJ-TMS250 250mm  
SJ-TMS300 300mm

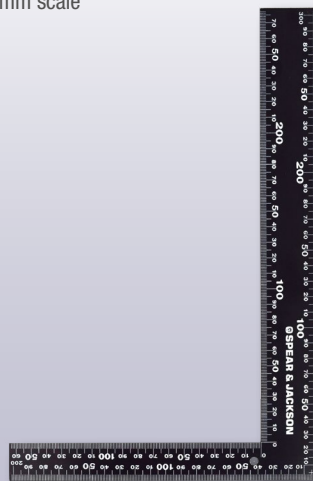
## SJ-RSM Rafter/Speed Square

- Sturdy aluminium construction
- Stamped conversion tables
- Thick frame design ensures safe use with a saw or knife
- Angles from 0 to 90 degrees can be marked quickly and easily



## EG-XXX Carpenters Square

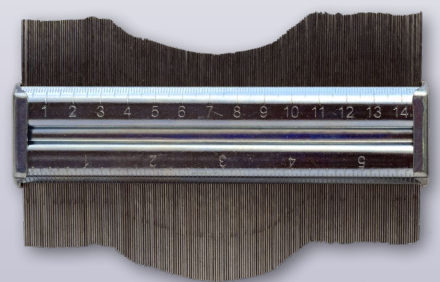
- Used for measuring and laying out angles
- Easy to read white on black numerals
- 1mm scale



EG-120 300x200mm, 4 Pack  
EG-6040 600x400mm, 4 Pack

## EG-200CG Contour Gauge

- Used to duplicate shapes and forms
- All metal construction
- Connecting plate for joining additional gauges
- 150mm



# Measure & Mark Combination Squares

## EC-CS150 Combination Square 150mm

- Hardened stainless steel rule
- Alloy head
- Metric & imperial graduations
- Level & scribe



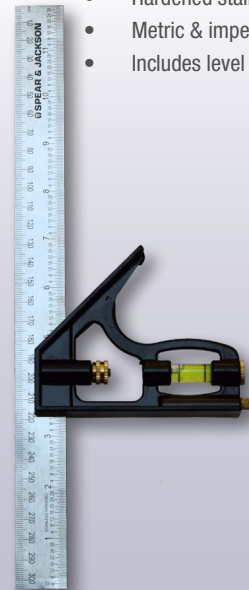
## EC-50-470R Combination Square 300mm

- Hardened stainless steel rule
- Alloy head
- Metric & imperial graduations
- Level & scribe



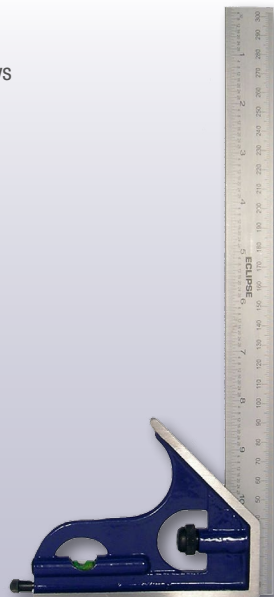
## SJ-SQC300 S&J Combination Square

- Hardened stainless steel rule
- Metric & imperial graduations
- Includes level & scribe



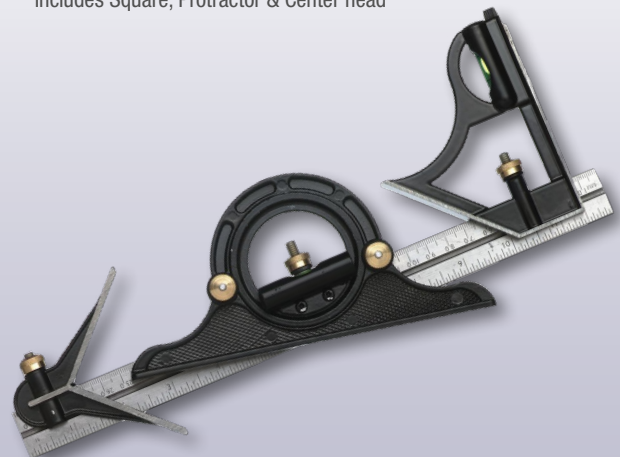
## EC-CS300 Pro Combination Square 300mm

- Cast iron square stock,
- Hardened & precision ground measurement faces and slide ways for greater accuracy
- Stainless steel rule 12"/300mm
- Metric & imperial graduations
- Includes level & scribe



## EC-50-460R Combination Set

- Stainless steel rule
- Graduated in metric and imperial
- Spirit level, scribe and knurled brass lock nut
- Includes Square, Protractor & Center head







## Carpenters' Range

A carefully selected range of popular carpenters' tools, including sliding bevels, try squares and mortice gauges. Classically designed with rosewood-stained hardwood handles and brass fittings, these tools hark back to the days of traditional craftsmanship and woodwork.

# Measure & Marking

## Carpenters' Range

### SJ-CSBX Sliding Bevel

- Rosewood stained hardwood with brass top and bottom faces
- Base Depth and Width: 26.5 ± 1mm x 18.0 ± 0.5mm
- Brass Edge Thickness: 3mm
- Spring Steel Blade



SJ-CSB75 190mm Base Length: 136 ± 1mm  
 SJ-CSB9 225mm Base Length: 162 ± 1mm  
 SJ-CSB12 300mm Base Length: 203 ± 1mm

### SJ-CTSX Try Square

- Rosewood stained hardwood with brass top and bottom faces
- Base Depth and Width: 48 x 18.0 ± 0.5mm
- Brass Edge Thickness: 3mm
- Spring Steel Blade



SJ-CTS6 150mm Base Length: 120 ± 1mm  
 SJ-CTS9 225mm Base Length: 165 ± 1mm  
 SJ-CTS105 265mm Base Length: 179 ± 1mm

### SJ-CMKG 200mm Marking Gauge

- Block - Rosewood stained hardwood with 2 brass plates on the working face, round brass bar through top section and brass lock
- Screw on top
- Block size: 66 x 55 x 28 ± 1mm
- Brass Plates in Block: 7 x 3mm
- Brass Bar in Block: 12mm diameter



### SJ-CMTG 200mm Mortice Gauge

- Block - Rosewood stained hardwood with 2 brass plates on the working face, round brass bar through top section and brass lock
- Screw on top
- Block size: 66 x 55 x 28 ± 1mm
- Brass Plates in Block: 7 x 3mm
- Brass Bar in Block: 12mm diameter





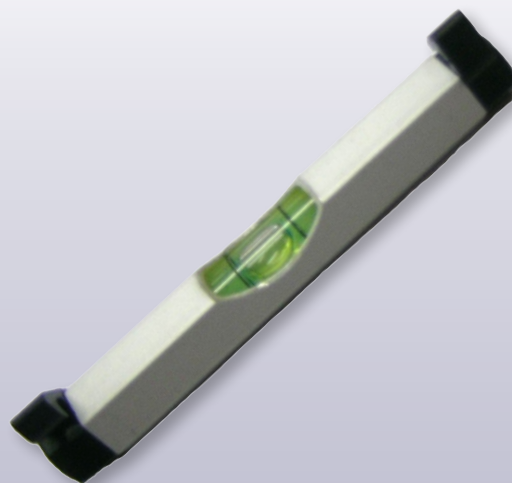


## Level Range

Being lightweight is key when it comes to spirit levels. Our range are all super light, but made with strong aluminium. EasyRead crystal clear vials makes finding a level fast and accurate, even in low light. Spear & Jackson spirit levels range from 600mm to 2,000mm and are accurate to within 0.5mm per metre.

### SJ-LL75M Line Level - Metal

- Ideal for levelling with a string line
- Clear easy read vial



### SJ-KTM230 Torpedo Level

- Ideal 230mm size for small levelling jobs
- 3 Vials for flat, 90° & 45° measuring
- Milled V base
- Shock absorbing end caps
- Magnetic base
- Durable aluminium construction



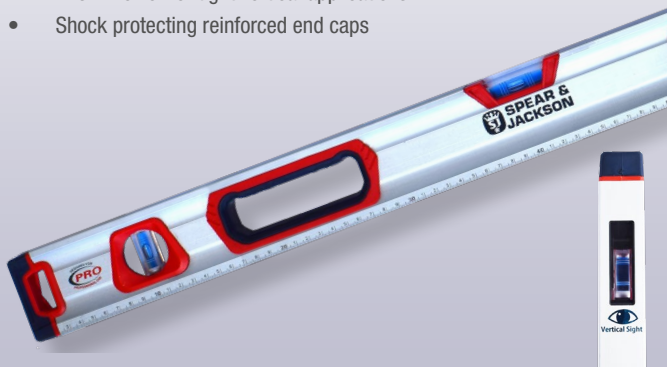


# Measure & Mark Levels

## Precision levels for crossbeams to caravans...

### SJ-PRL PRO Magnetic Levels

- 3 High accuracy vials 0.5/1000mm
- Durable corrosion resistant aluminium construction
- Magnetic CNC milled base
- Metric ruler markings
- Dual material ergonomic hand grips
- Prism viewer for tight vertical applications
- Shock protecting reinforced end caps



SJ-PRL6 600mm, 5 Pack  
SJ-PRL8 800mm, 5 Pack  
SJ-PRL12 1200mm, 5 Pack

SJ-PRL20 2000mm, 5 Pack  
SJ-PRL2P Twin Pack 600 & 1200mm

### SJ-BL Box Levels

- 3 High accuracy vials 0.5/1000mm
- Soft touch hand grips
- Shock protecting end caps
- Metric ruler markings
- Precision machined levelling edges

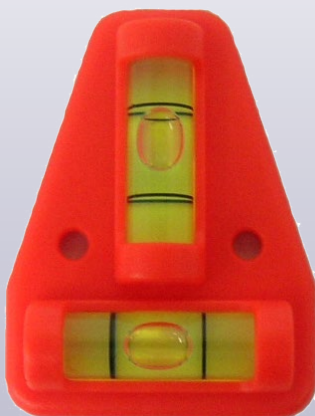


SJ-BL6 600mm, 5 Pack  
SJ-BL8 800mm, 5 Pack

SJ-BL12 1200mm, 5 Pack  
SJ-BL2P Twin Pack 600 & 1200mm

### SJ-CCL60 Cross Check Level

- Ideal for levelling in 2 planes
- Perfect for caravans or fridges
- 2 vials in fluro case
- Mounting holes for permanent fixing



### SJ-BL45 Bullseye Level

- Levels in 2 plane with a single bubble
- Perfect for caravans or fridges
- Mounting holes for permanent fixing





# Measure & Mark Pencils

For all your marking requirements..

## SJ-DHP Deep Hole Pencil

Ideal for marking wood, metal, plastic, and ceramics in deep holes or hard to reach places.

- Sturdy metal shaft and durable plastic casing provide maximum lead protection for use in workshops or on site
- Always keep your pencil to hand with the integral holster clip
- Click release button features a convenient built-in lead sharpener
- Ready supplied with a 2B graphite lead



SJ-DHP, Pencil

SJ-DHPLEAD, Replacement Lead

## SJ-PM-X Paint Markers

- All purpose paint marker
- Suitable for most surfaces
- Weather proof
- Xylene & Toluene free
- 2mm tip

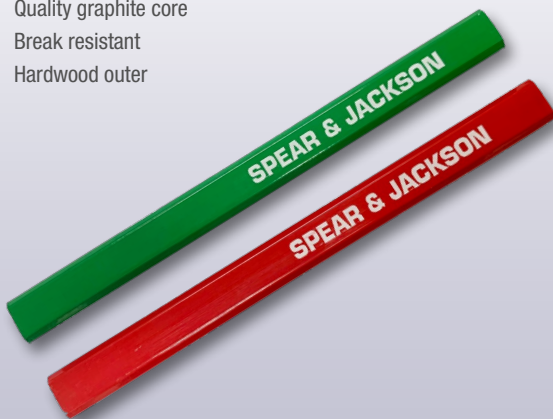


SJ-PM-B Blue  
SJ-PM-R Red

SJ-PM-W White  
SJ-PM-Y Yellow

## SJ-BPENX Builders Pencils

- Hard pencil is suitable for use on concrete, brickwork & other hard surfaces
- Medium/soft pencil is suitable for use on wood & plaster board
- Quality graphite core
- Break resistant
- Hardwood outer



SJ-BPENM, Medium, 72 Pack

SJ-BPENH, Hard, 72 Pack

## SJ-BPENMT15 Builders Pencils Medium Tube 15 Piece

- Medium/soft pencil is suitable for use on wood & plaster board
- Quality graphite core
- Break resistant
- Hardwood outer
- Supplied in a durable plastic tube





# Measure & Mark Chalk Line

For all your marking requirements..

## SJ-CRM100 Chalk Reel

- Used for the marking out of lines for building, brickwork etc
- Heavy duty metal case
- 30m line



## SJ-CR3X 3x Rapid Rewind Chalk Reel

- Used for the marking out of lines for building, brickwork etc
- Durable plastic case
- 30m line
- Self locking handle & anchor ring
- Leak proof & easy to refill
- Push button line release



## SJ-CLP Chalk Line 3x Rewind Pack

- Used for the marking out of lines for building, brickwork etc
- 3x rapid rewind reel & 115g blue chalk
- 30m line
- Heavy duty metal case
- Self locking handle & anchor ring
- Leak proof & easy to refill
- Push button line release



## SJ-MCXX Marking Chalk

- Used for the marking out of lines for building, brickwork etc
- Black & red for more permanent marking
- Blue & yellow for temporary marking
- Suitable for most standard chalk reels



SJ-MCB8 Blue 228g, Std Temp, 12 Pk  
SJ-MCR8 Red 228g, Hi Vis Perm, 12 Pk

SJ-MCY8 Yellow 228g, Hi Vis Temp, 12 Pk  
SJ-MCBLK6 Black 170g, Std Perm, 12 Pk



Available from all good hand tool stockists

These products are guaranteed against defects in manufacturing, subject to wear and tear and the provision of reasonable care and maintenance.

This does not affect your statutory rights.

**CONTACT  
US!**

**QEP Australasia**

**Tel: 1300 731 818**

**Email: [sjsales@qepaust.com.au](mailto:sjsales@qepaust.com.au)**

**Follow us on:**



**FIND OUT MORE AT [www.spearandjackson.com.au](http://www.spearandjackson.com.au)**



Distributed by:  
QEP Australasia  
68 Prosperity Way, Dandenong South, Victoria Australia 3175  
[www.qepaustralasia.com.au](http://www.qepaustralasia.com.au)

